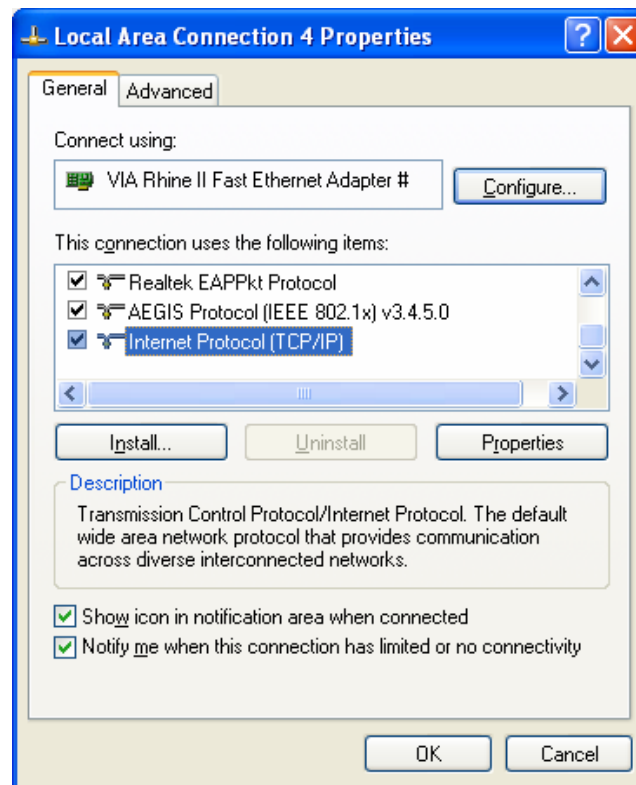


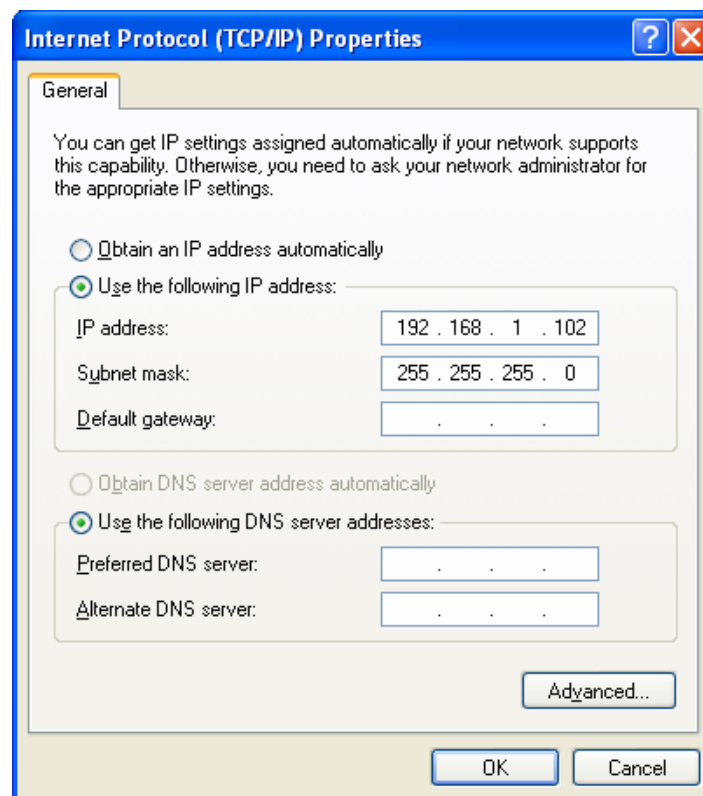
How to Set Static IP Address when adding additional Viewing Stations to a preconfigured 5 Minute Photo Loader/Server System or other system utilizing a switch (rather than a router).

Start – Control Panel – Network Connections

Right click on “Local Network Connection #” (where # indicates card in the system) and select “Properties”.



Highlight “Internet Protocol (TCP/IP) and click on the “Properties” button.



Select "Use the following IP Address" and set the "Static" IP Address as follows:

192.168.1.### - where ### is the next sequential/available IP Address starting at 101 for the first Viewing Station, 102 for the second Viewing Station, etc.

NOTE: Each device on a network MUST have a unique IP Address. On a 5 Minute Photo preconfigured system the Loader/Server will preset to 192.168.1.100 and the Viewing Stations will be set as follows (refer to the pre-attached stickers on any Loader/Server or Viewing Station preconfigured by 5 Minute Photo:

[Name of Computer] = [Unique IP Address]

Viewing1 = 192.168.1.101

Viewing2 = 192.168.1.102

Viewing3 = 192.168.1.103....etc.

The "Subnet Mask" should ALWAYS be 255.255.255.0 on all network devices when using a preconfigured 5 Minute Photo Server/Loader/System.

Click on OK.

Computer should now be able to communicate with the Loader/Server.

Also make sure that all computers (Loader/Server and Viewing Stations) belong to the same workgroup name (ie. ONSITE).