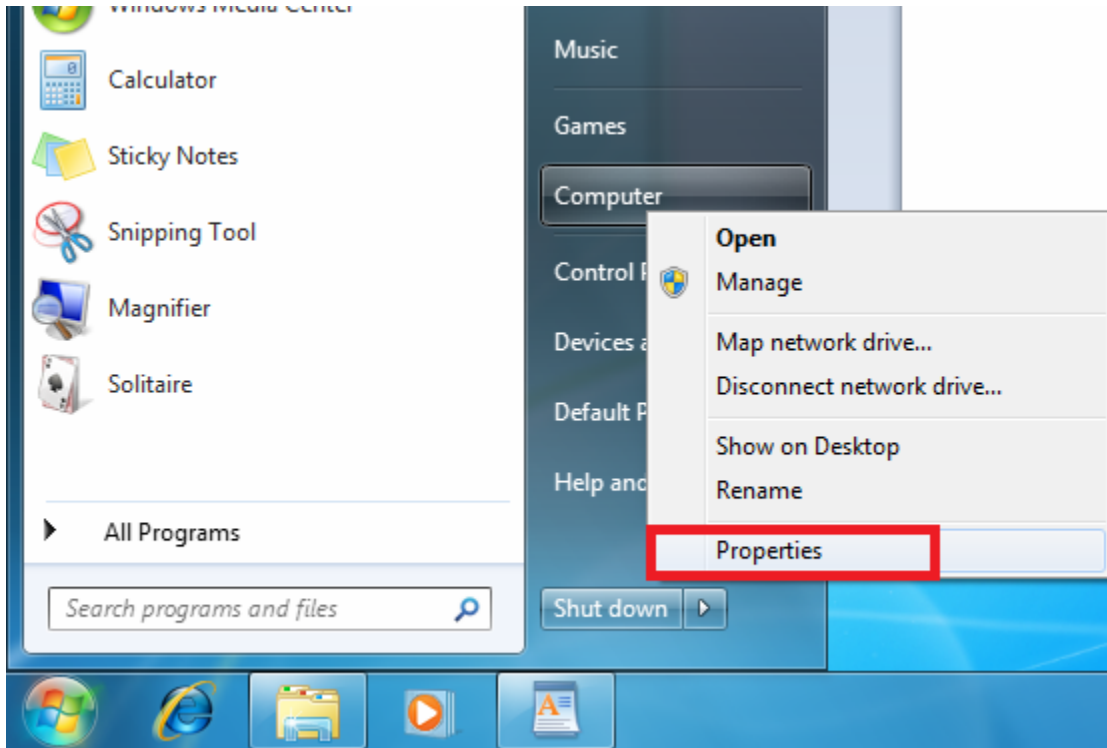
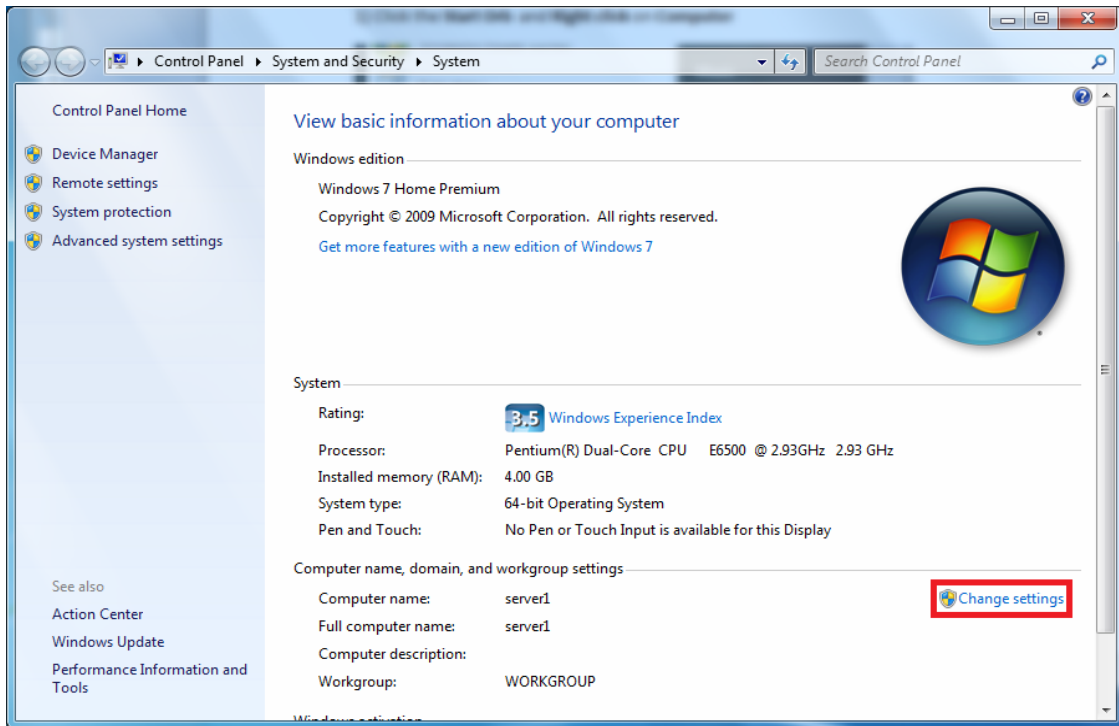


To join the ONSITE workgroup

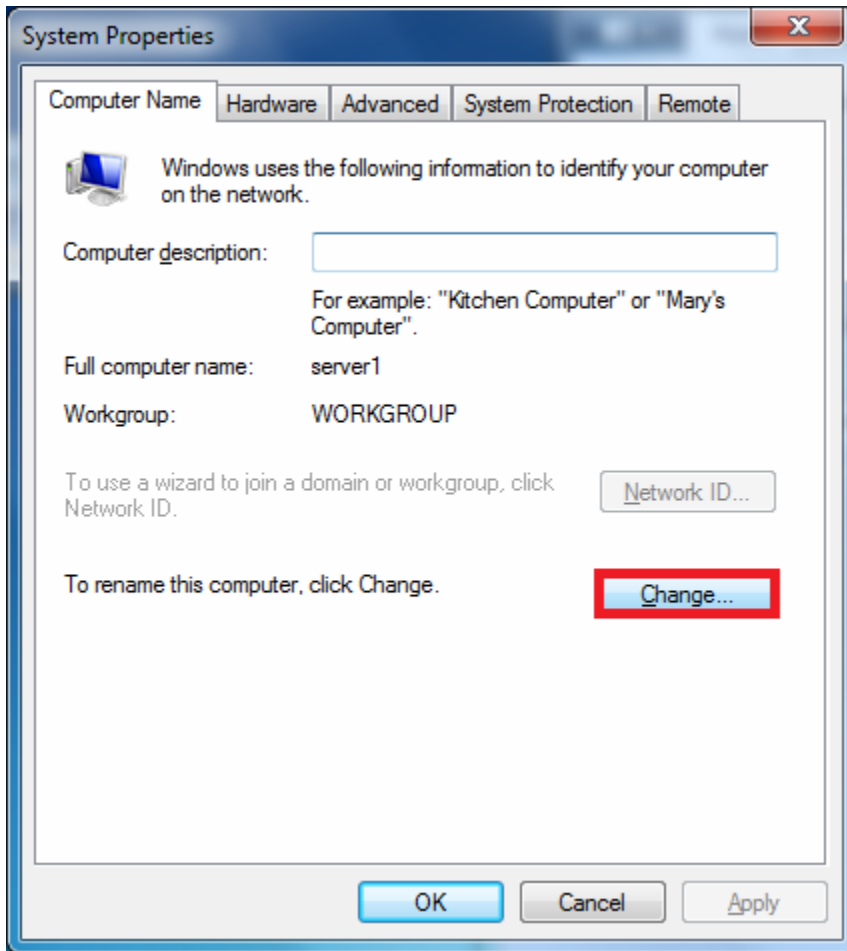
1) Click the **Start Orb** and **Right click** on **Computer**



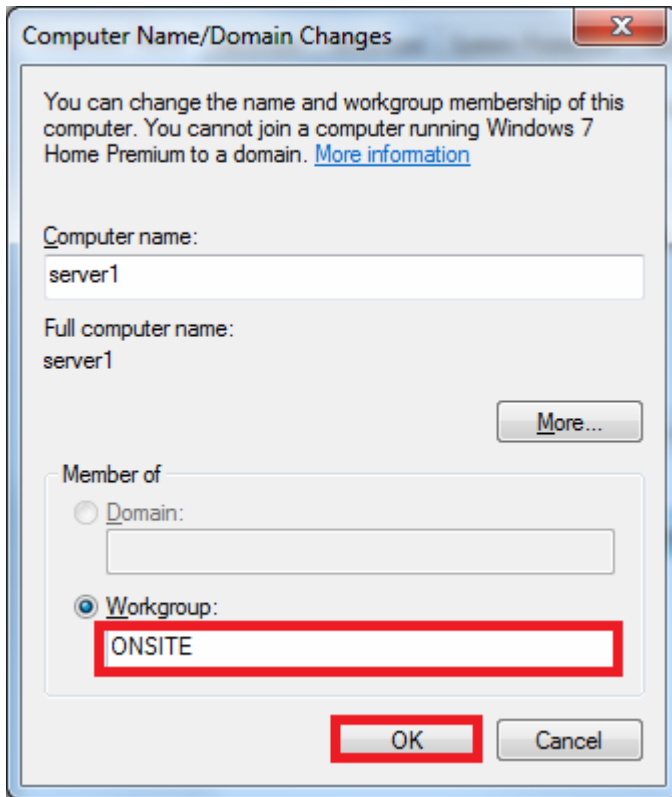
2) Click **Change settings**



3) Click **Change**

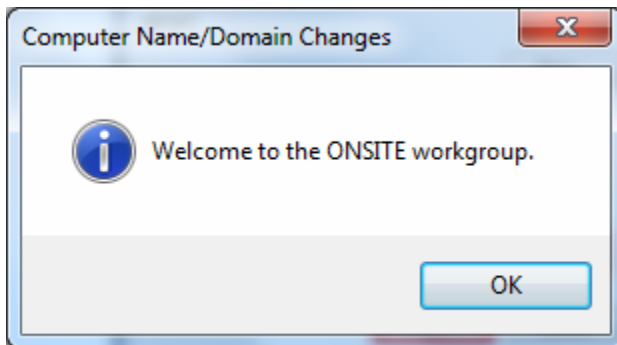


4) Type "ONSITE" into the **Workgroup** input box



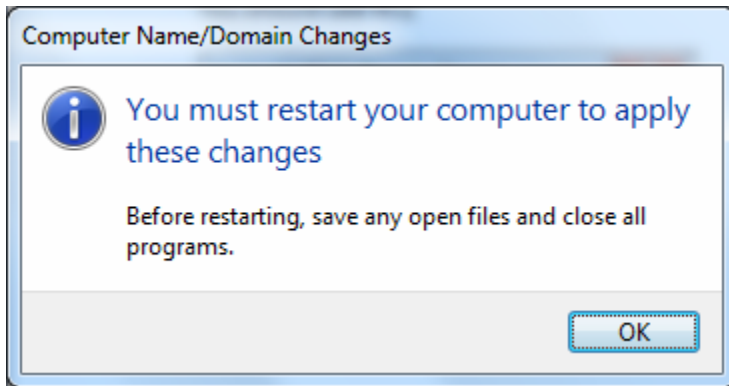
Click **OK**

You should see this



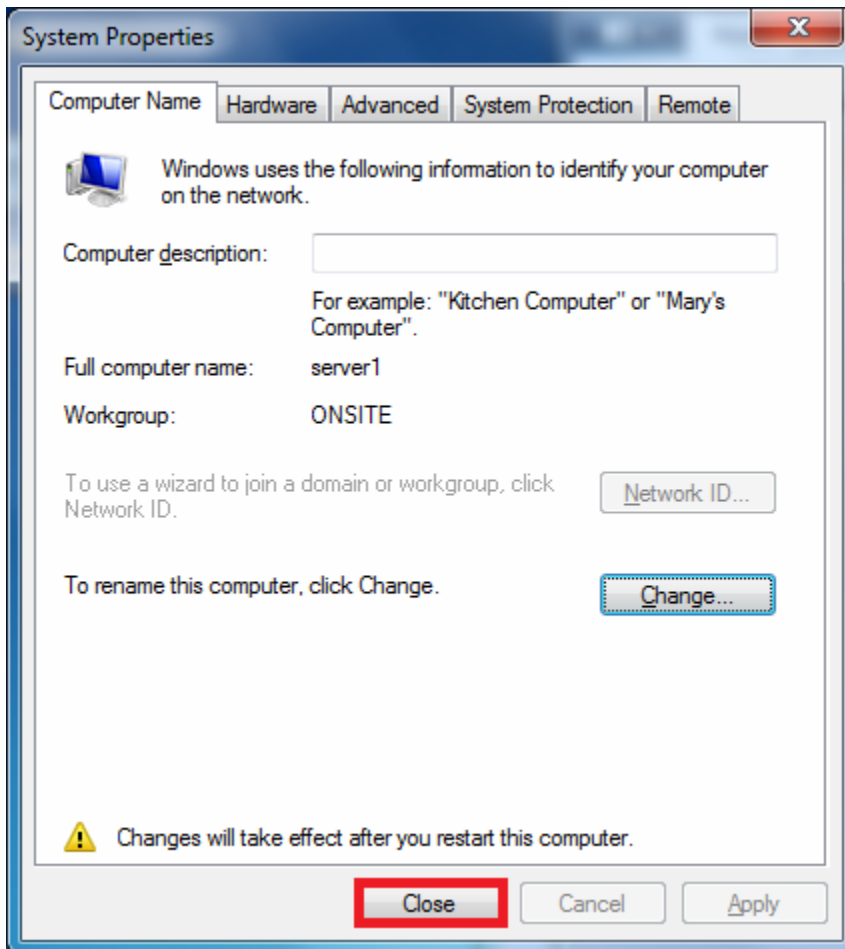
click **OK**

You should see this

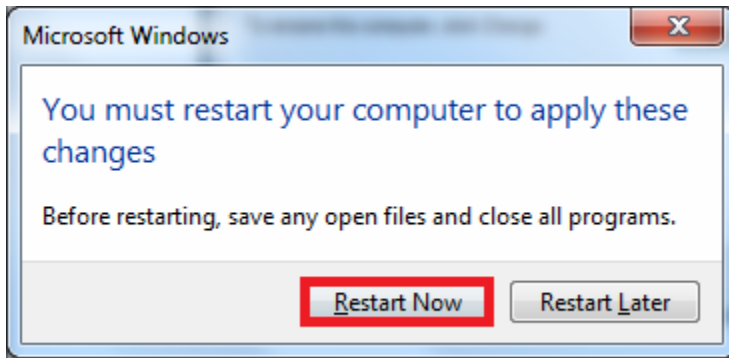


Click **OK**

Click **Close**



You should see this

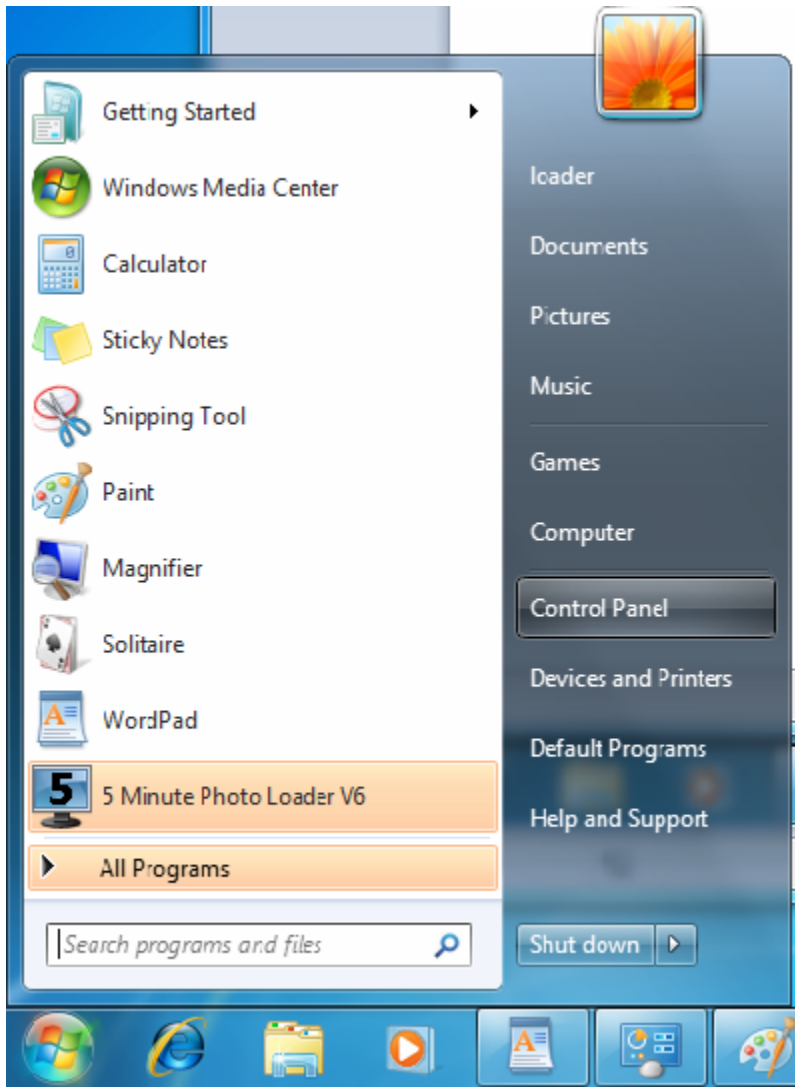


Click **Restart Now**

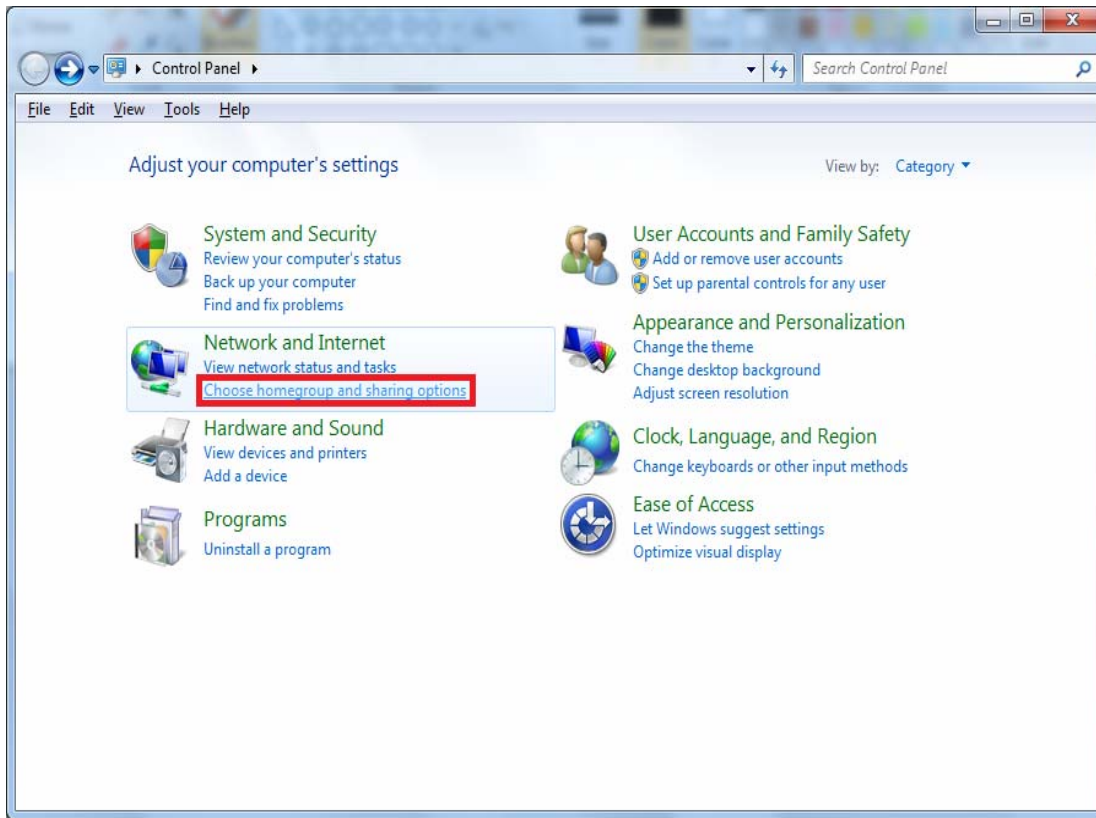
5) Have some pie, because now you can view other machines in the work group.

To setup the EventView folder

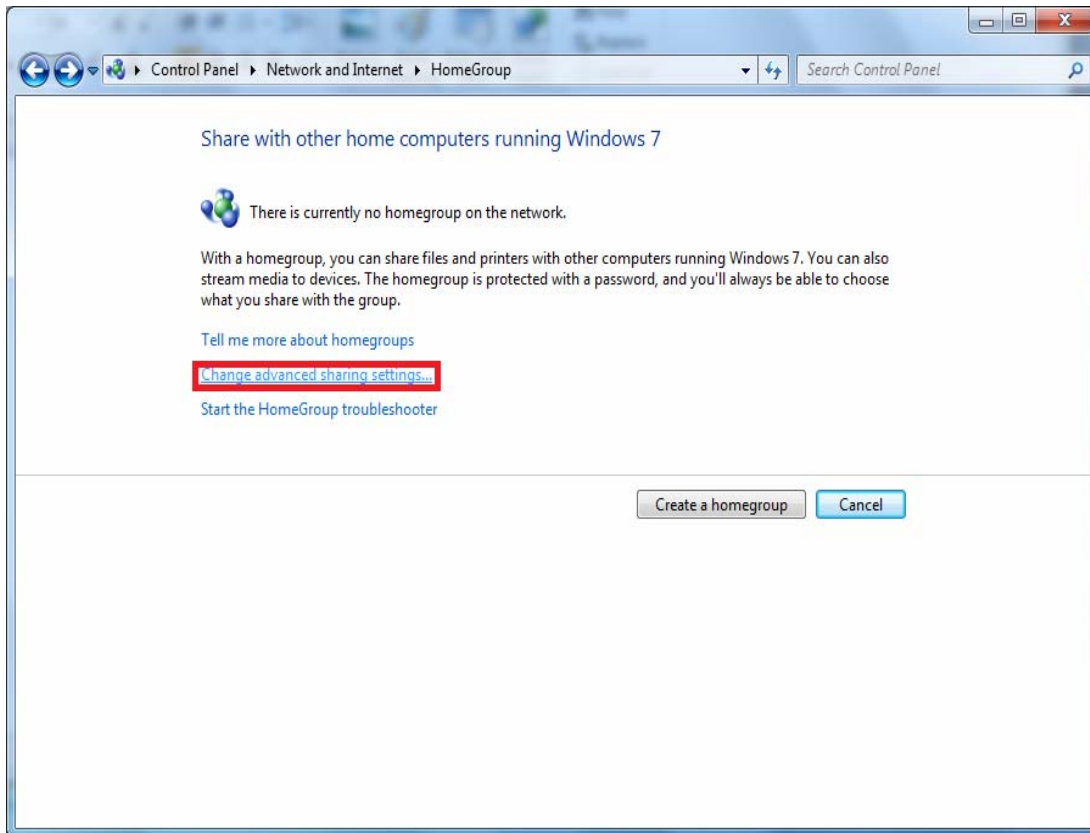
1) Click on the Start Orb and go to the control panel.



2) Look for **Network and Internet** look just below that and click **Choose homegroup and sharing options**.

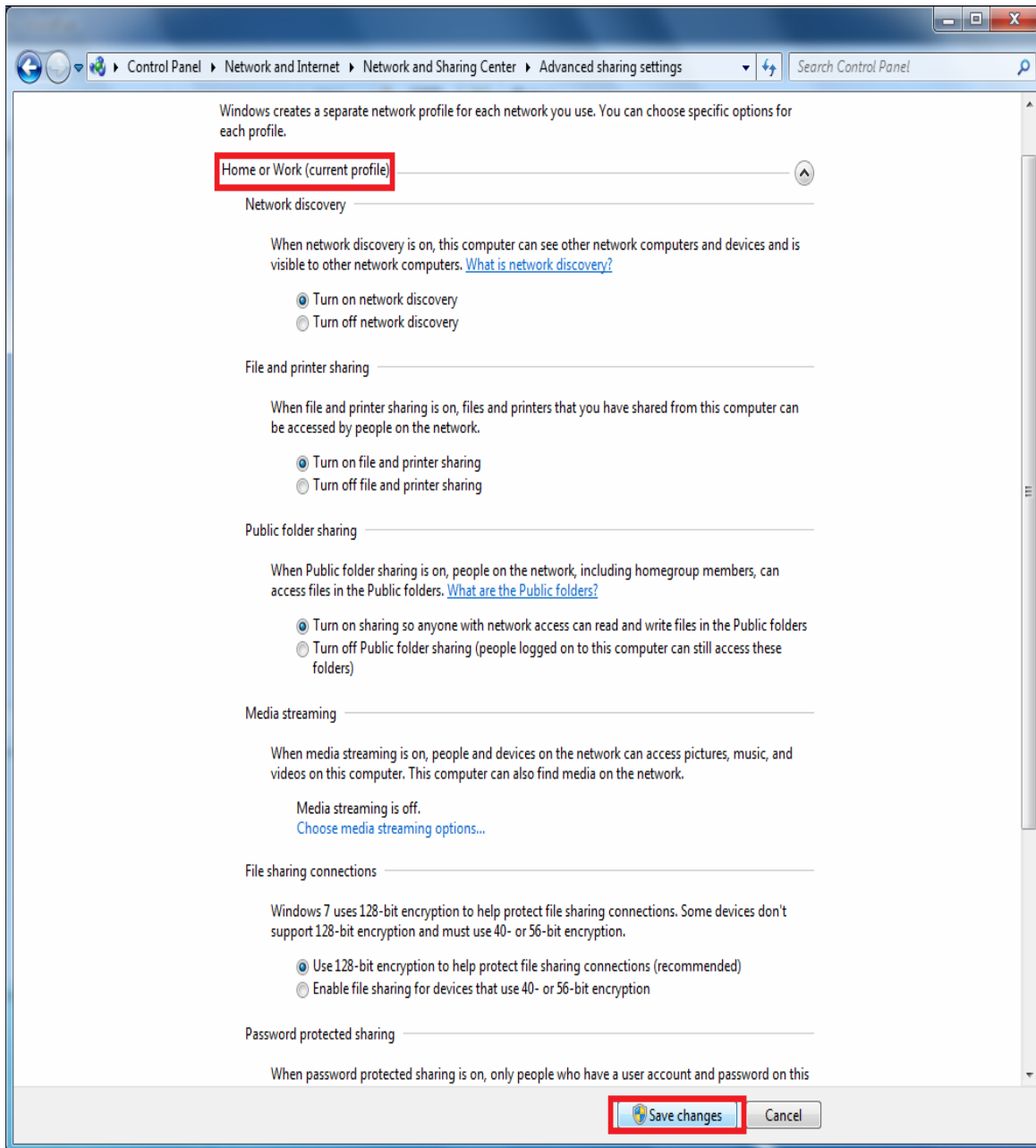


3) Click **Change advanced sharing settings**



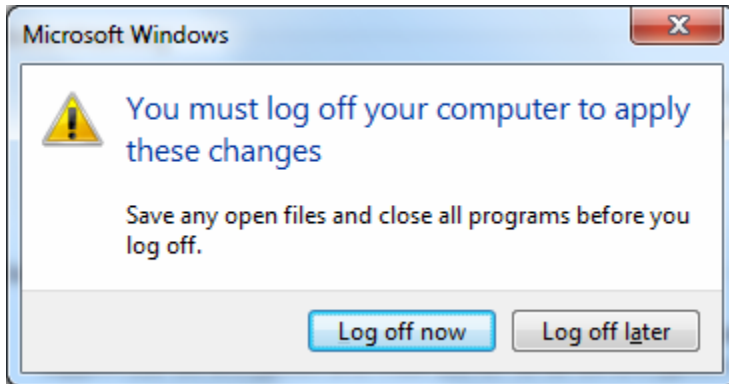
4) Under the **Home or Work** portion, make sure that the following are checked:

- **Turn on network discovery**
- **Turn on file and printer sharing**
- **Turn on sharing so anyone with network access can read and write files in the Public folders**
- **Use 128-bit encryption...**
- **Turn off password protected sharing**
- **Use user accounts and passwords to connect to other computers**



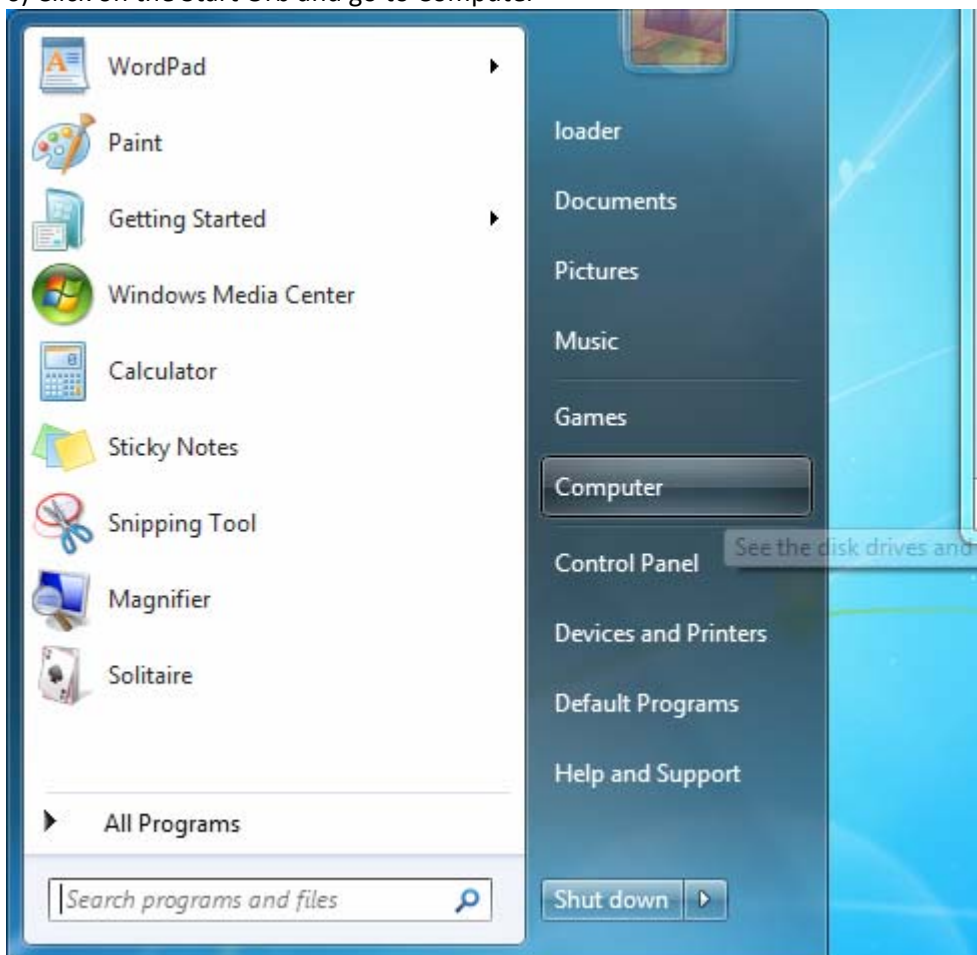
Click **Save changes**

5) It will ask you to log off of the computer



click **Log off now**

6) Click on the Start Orb and go to Computer

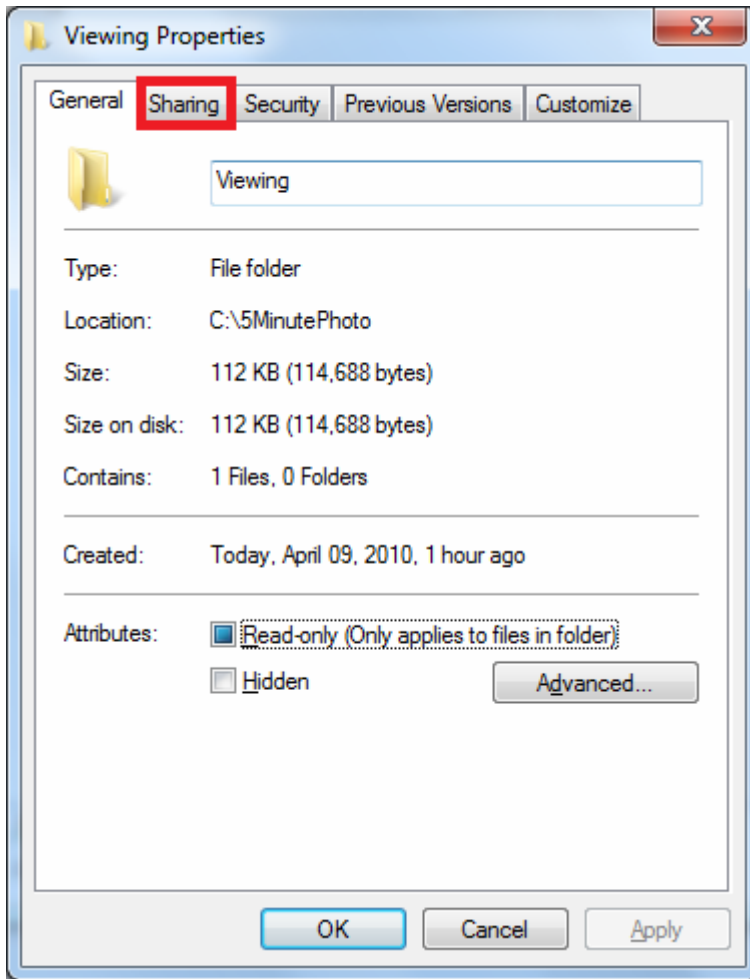


go to your system drive. In almost all cases this is **Local Disk (C:)**

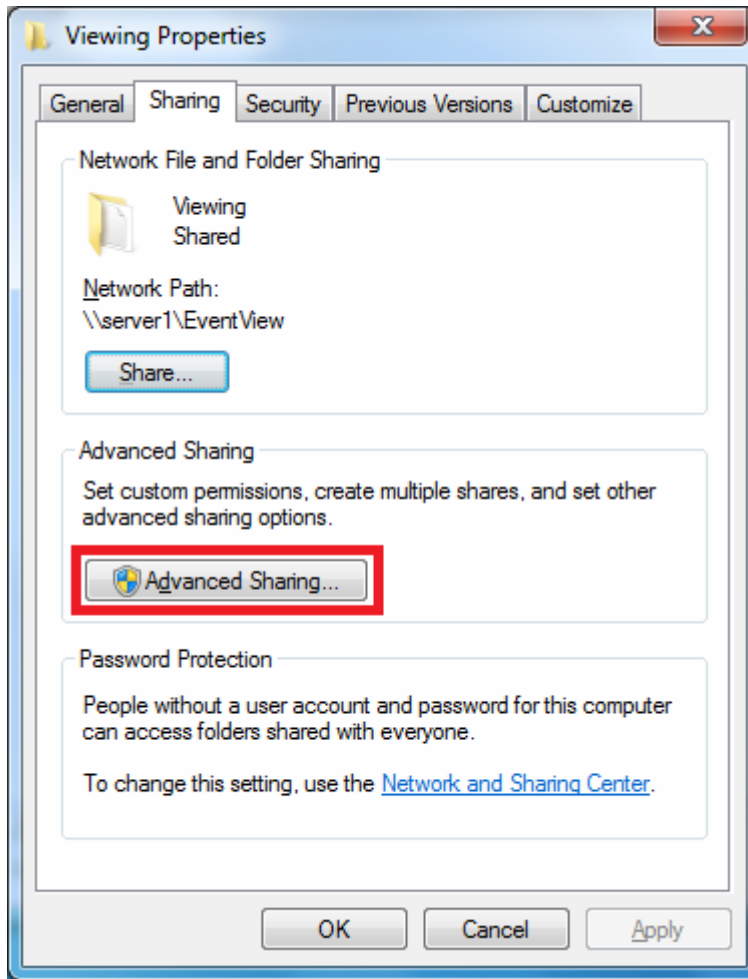
Open the folder called **5MinutePhoto**

7) **Right click** on the folder called **Viewing** and select **Properties**

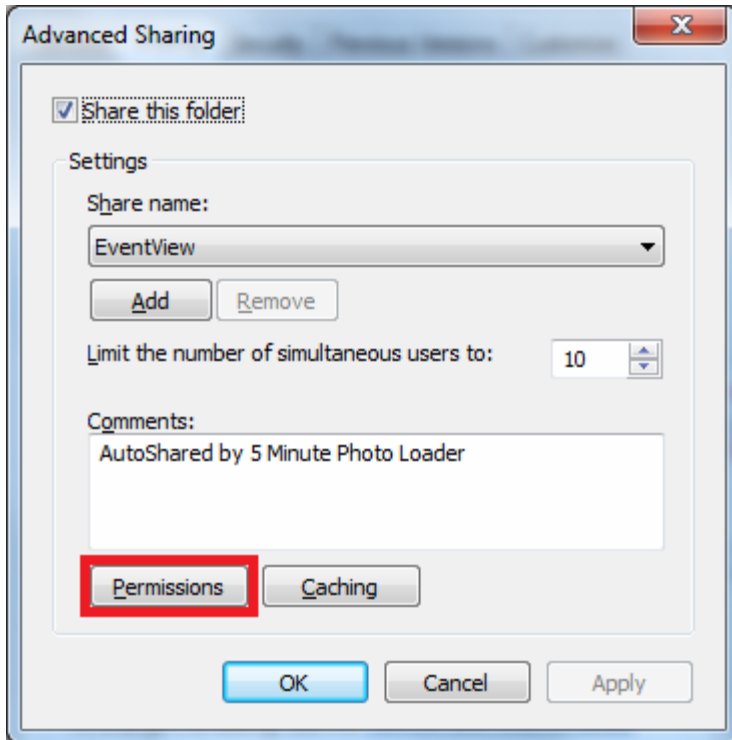
8) Click the **Sharing** tab at the top of the window



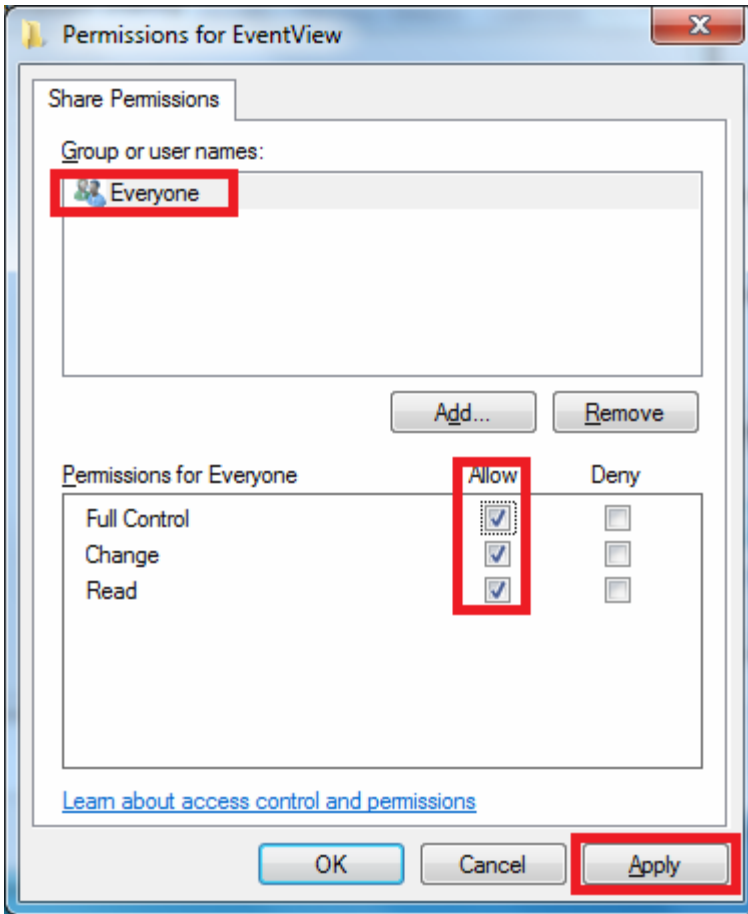
9) Click on **Advanced Sharing**



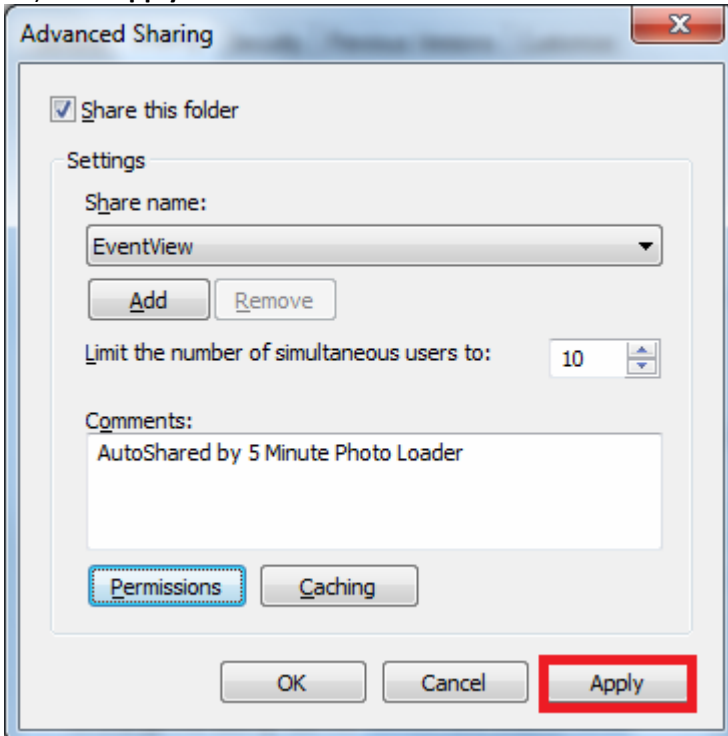
10) Click **Permissions**



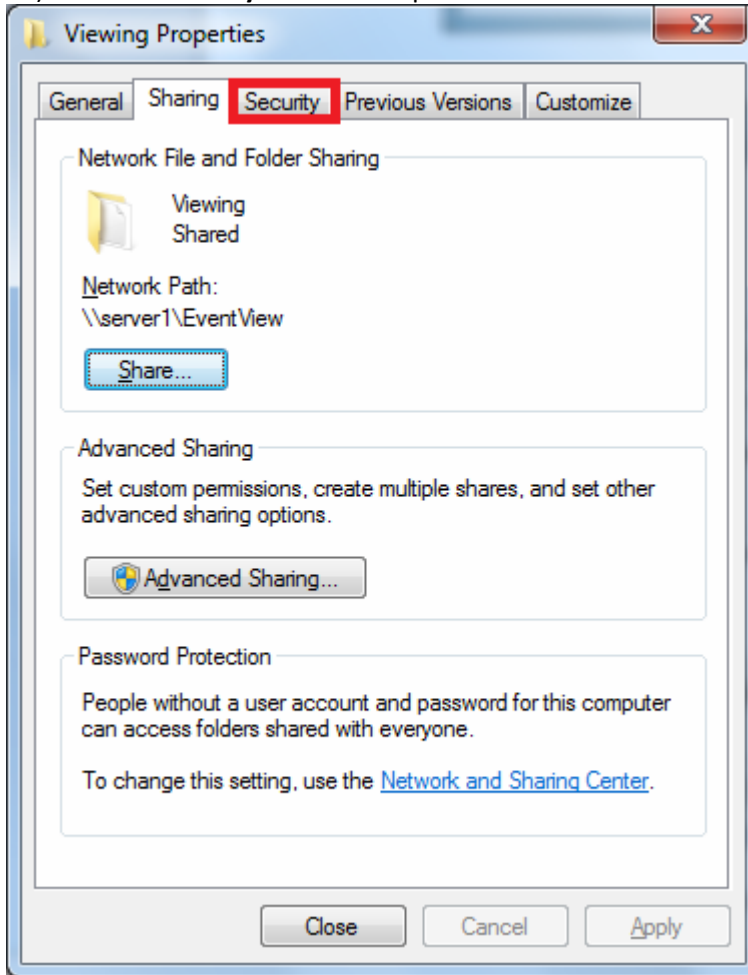
Make sure that the group **Everyone** is selected. Give that group **Full Control** and Click **Apply** and **OK**



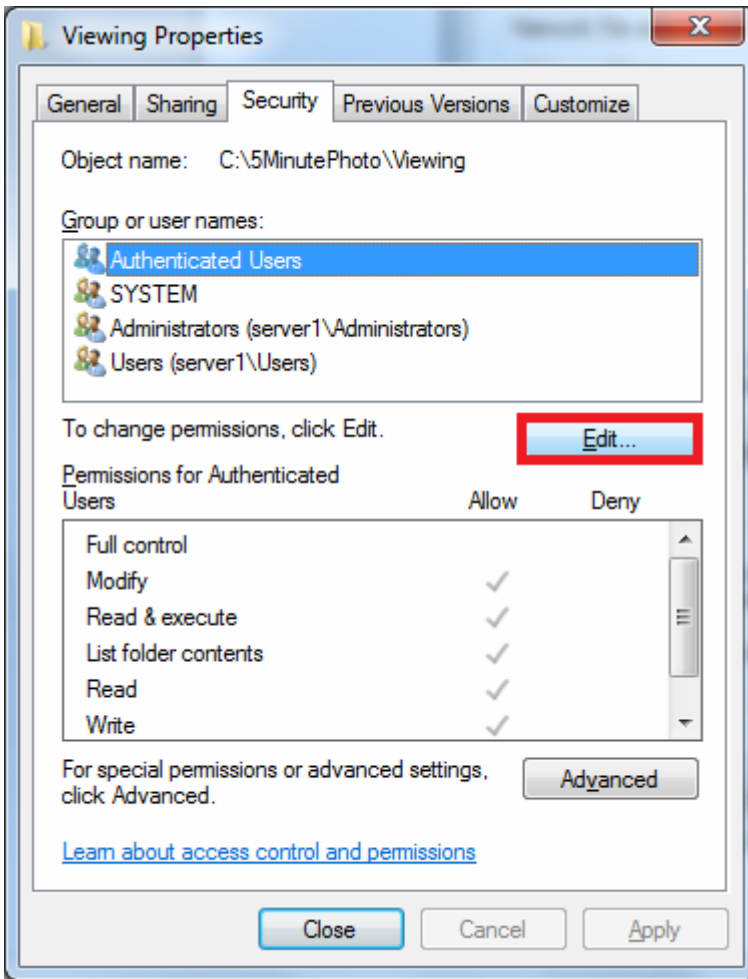
11) Click **Apply** and **OK**



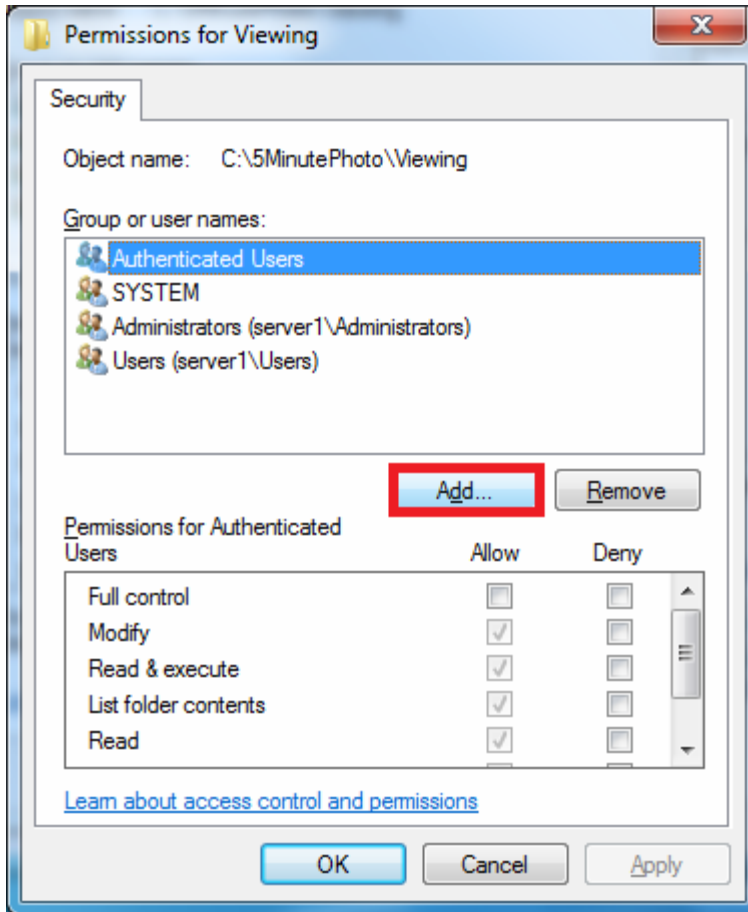
12) Click the **Security** tab at the top of the window



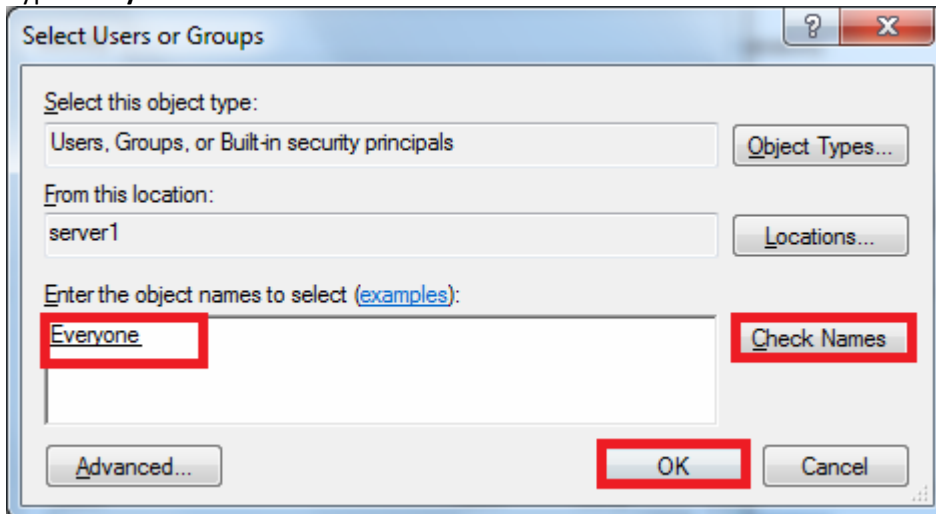
Click **Edit**



Click **Add**

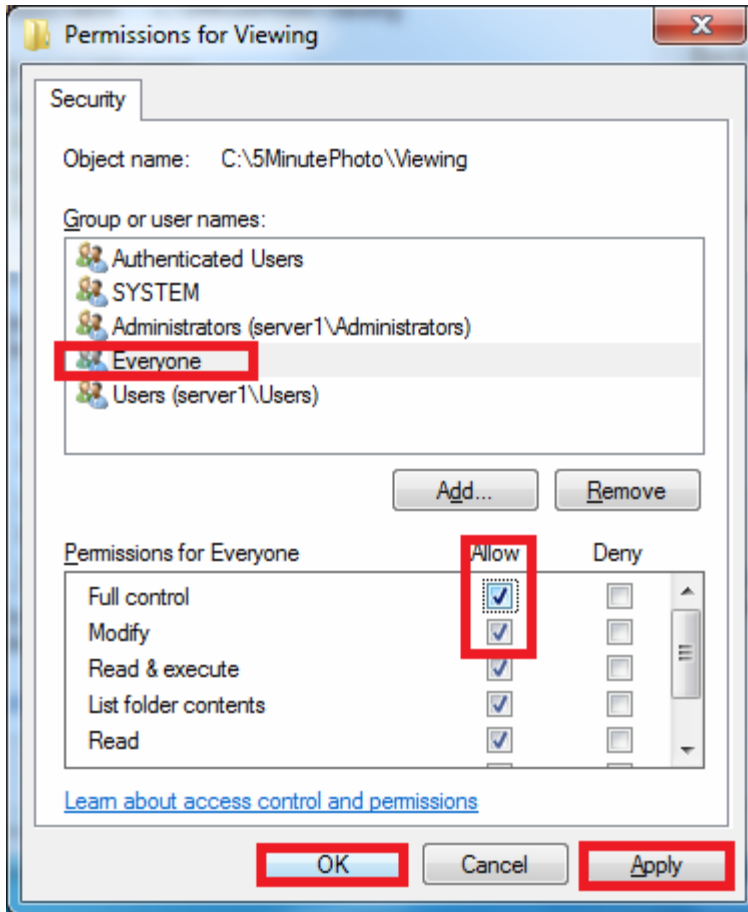


Type **everyone** and click **Check Names** and then click **OK**



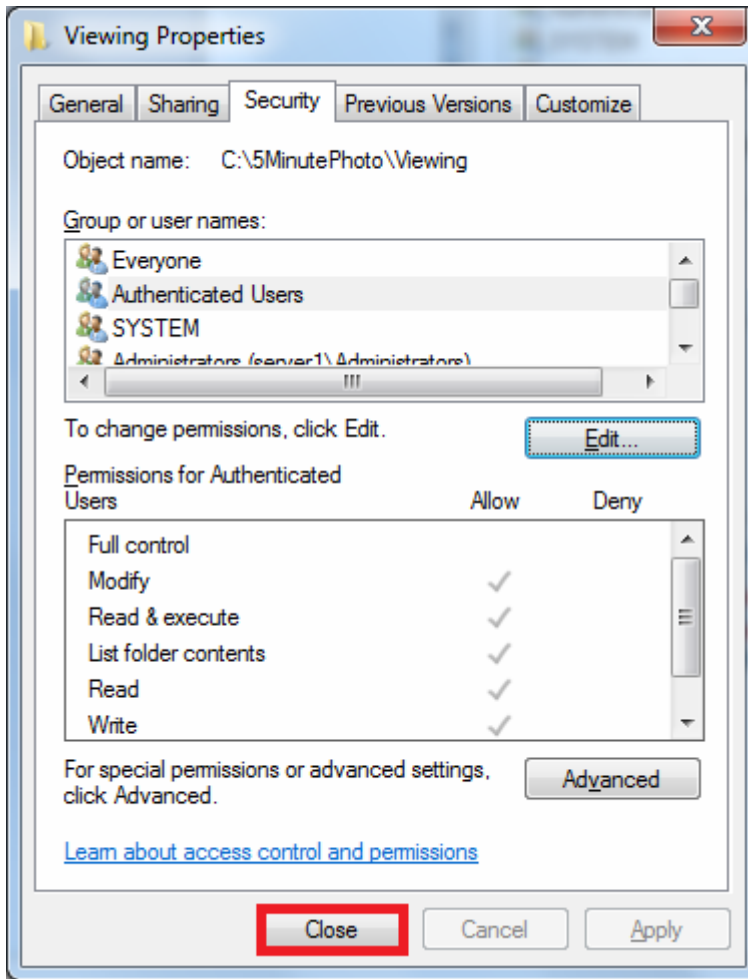
After you click **Check Names** Everyone will be underlined

Make sure that the group **Everyone** is selected and give that group **Full Control**



Click **Apply** and **OK**

Click **Close**



13) Have some cake, because you are now ready to start loading and sharing images.